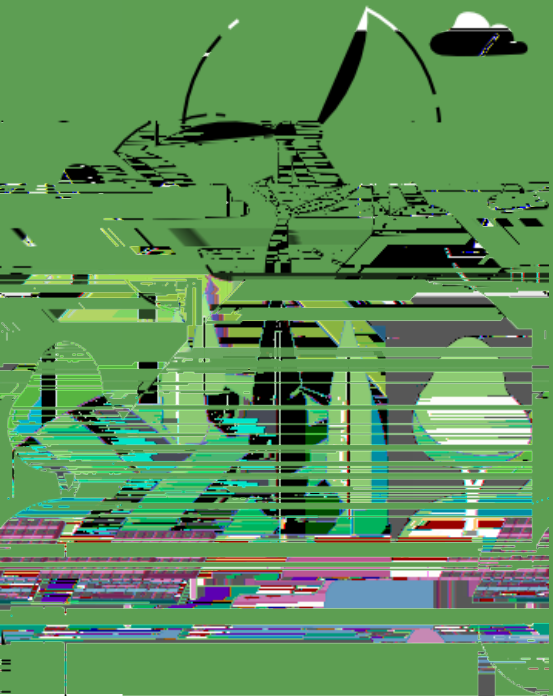

Committed to Advancing Cutting-Edge Technology,
Fulfilling the Ambitions of Our Global Partners



Contents

01 Sustainable Water Management

03 Wastewater Management



Sustainable Water Management System

During our operations, we strictly comply with the *Water Law of the* and other applicable regulations in the jurisdictions where our

Republic of China

Sustainable Water Management Targets and Actions

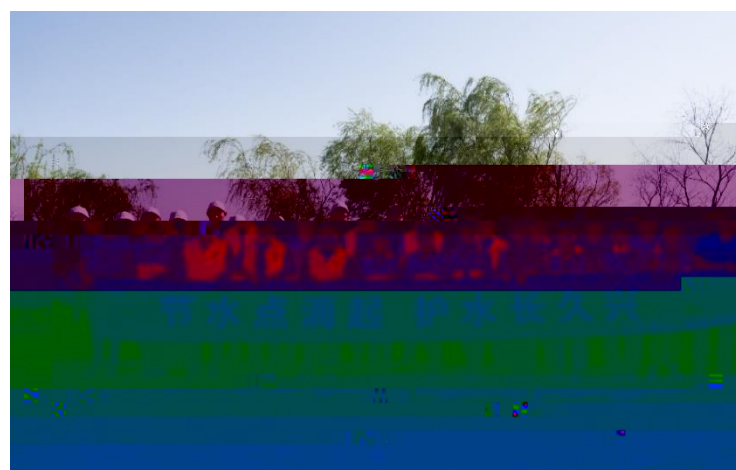
Each pilot subsidiary, in accordance with the requirements of the *International Water Stewardship Standard* issued by the Alliance for Water Stewardship (AWS), gathers relevant data to identify and analyze water-related risks and opportunities. On this basis and integrated with strategic water management planning, the subsidiary establishes

Enhancement of Water Use Efficiency

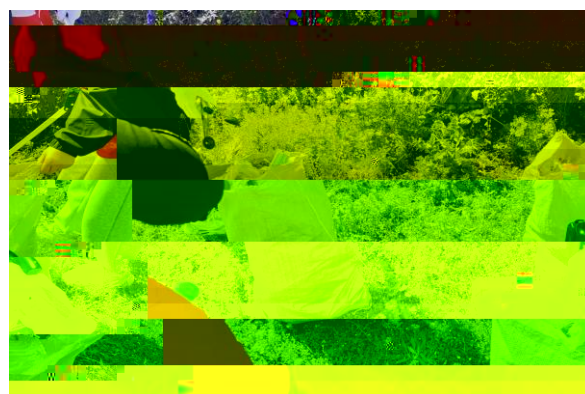
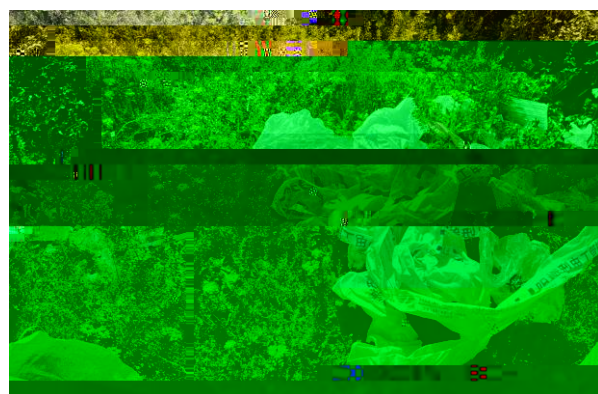
To standardize water use and reduce waste, we utilize a digital platform to continuously track water consumption, discharge, and balance across production and domestic activities. We also implement water

Case Jinxi Factory held "Join the Hour to Guard Our Water" Activity

On the occasion of 2025 World Water Day and Earth Hour, Jinxi factory partnered with the local Water Affairs Management Center, EHS Office, neighboring company representatives, and environmental NGOs to hold a river protection and patrol activity along Dianshan Lake's Huanhu Avenue in Sheng Tang Village. The team removed 120 kg of shoreline waste, contributing to local ecological restoration and demonstrating the Company's commitment to water conservation, ecosystem protection, and innovative water stewardship.



The World Water Day Activity



Comparison of River Protection and Patrol Efforts Before and After Cleanup



Wastewater Management

Luxshare Precision prioritizes environmental protection and sustainable development, strictly complying with national and local regulations including Water Pollution Prevention and Control Law of the People's Republic of China. We employ scientific management and resource-oriented strategies for wastewater across all factories.

Approaches to Wastewater Management

Tailored treatment processes are applied based on pollutant type and concentration to ensure all discharges meet regulatory standards. Through integrated measures such as rainwater-sewage separation, discharge control, and monitoring, along with



Our Actions and Progress

Through ongoing promotion of water stewardship, optimized water use, and water-saving projects, Luxshare Precision has achieved